

RRT-35SATA-R

3.5 SATA Enclosure with Removable Module

The 3.5" SATA enclosure with removable SSD module is for applications that require the frequent removal of SSD, fast transfer rates and large capacities.

It consists of two components; the 3.5" SATA enclosure with SATA 3 interface that has standard 3.5" mounting holes and removable SATA SSD module. The connectors between the drive module and the enclosure are rated for 100,000 mating cycles to support frequent insertions and removals.

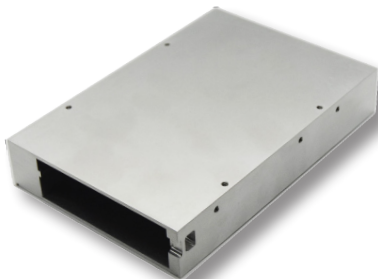
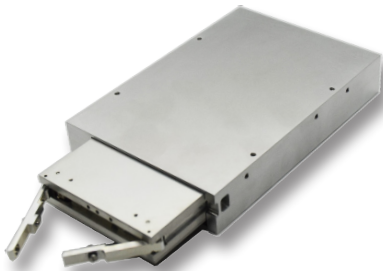
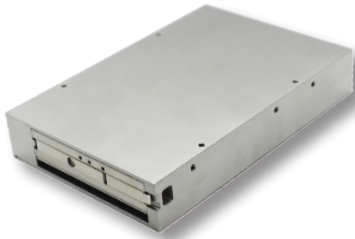
The SATA SSD module can use any COTS 2.5" SATA Solid State Drive (SSD) providing capacities up to 15TB and transfer rates of up to 600 MB/S. Options for FIPS140-2, FIPS197, TCG Opal, and military erase.



FEATURES

- Capacities up to 15 TB
- 600 MB/S transfer rates
- Removable SSD module
- SATA 3 (SATA600)
- Compatible with Sata 1,2
- 100,000 mating cycles
- 3.5" form factor
- Boot and/or disk storage
- COTS 2.5" SATA SSDs
- Military erase options
- FIPS140-2, FIPS197, TCG Opal options
- Rugged design
- Current limited
- No additional software required

**EASILY REMOVE SATA DRIVE
MODULE FROM**



3.5" SATA Enclosure

RRT-35SATA-R-□-□

OPTIONS (MAY BE LEFT BLANK)	
CONFORMAL COATING	
UR	POLYURETHANE
AR	ACRYLIC
EXTENDED TEMP. RANGE	
X	-40° C to 85° C

EXAMPLES:

RRT-35-SATA-R
RRT-35-SATA-R-UR-X

Removable SATA SSD Drive Module

RRT-DM2-SATA-□-□-□-□-□-□

REQUIREMENTS	
NAND FLASH TYPE	
SLC	SINGLE LEVEL CELL
MLC	MULTI LEVEL CELL
TLC	TRI LEVEL CELL
CAPACITY	
CAPACITIES UP TO 15TB	
OPTIONS (MAY BE LEFT BLANK)	
EXTENDED TEMP. RANGE	
X	-40° C to 85° C
CONFORMAL COATING	
UR	POLYURETHANE
AR	ACRYLIC
SECURITY	
FE	FAST ERASE
SE1	NSA/CSS MANUAL 9-12 ERASE
SE2	RCC-TG IRIG 106-07 CHAPTER 10 ERASE
OPAL	TCG OPAL COMPLIANT
FIPS140-2	FIPS140-2 COMPLIANT
FIPS197	FIPS197 COMPLIANT
TOOLS	
TS	THUMB SCREWS

EXAMPLES:

RRT-DM2-SATA-TLC-15TB
RRT-DM2-SATA-MLC-8GB-UR-X-SE1
RRT-DM2-SATA-SLC-480GB

3.5" SATA Enclosure with Removable SSD Module

PERFORMANCE			
NAND FLASH TYPE	TLC	MLC	SLC
CAPACITIES ¹	UP TO 15TB	UP TO 8TB	UP TO 480GB
INTERFACE ²	SATA3		
THROUGHPUT - SUSTAINED	450 MB/S	400 MB/S	400 MB/S
RELIABILITY			
MTBF-DRIVE	1 MILLION HOURS	1 MILLION HOURS	2 MILLION HOURS
MTBF-3.5" ENCLOSURE ⁶	3 MILLION HOURS		
ENDURANCE (100GB) TOTAL BYTES WRITTEN	70 TBW	70 TBW	350 TBW
DATA RETENTION	1 YEAR	1 YEAR ⁴	10 YEARS ⁵
POWER			
VOLTAGE	+5V +/- 5%		
WATTS (IDLE)	1.2 W		
WATTS (ACTIVE)	2.5 W		
ENVIRONMENTAL			
OPERATING TEMP. ³	0°C to 70°C	0°C to 70°C -40°C to 85°C - X option	
STORAGE TEMP.	-40°C to 85°C		
ALTITUDE	80,000 FT (24,000 METERS)		
RELATIVE HUMIDITY	5% TO 95%		
SHOCK	40 g 11 MILLISECOND HALF-SINE		
VIBRATION	0.1 g ² /HZ100 HZ TO 1000 HZ		
PHYSICAL			
FORM FACTOR	3.5"		
WEIGHT	21 OZ (578 G)		
DIMENSIONS	4.0" x 5.75" x 1.0"(101.6mm x 146.1mm x 25.4mm)		
NOTES			
(1) Larger capacities available as new COTS 2.5" drives released (2) Interface connected via standard SATA 7-pin connector (3) Thermal qualification per MIL-STD-810, Method 501, Procedure II, and MIL-STD-810, Method 502, Procedure II (4) MLC: 10 years at 0% TBW ramping down to 1 year at 100% TBW (5) SLC: 10 years at 10% TBW ramping down to 1 year at 100% TBW (6) Telcordia SR-322, Issue 3, operating temp (40C), electrical stress (50%), environmental factor (1.0)			

Red Rock Technologies, Inc. reserves the right to modify, change or discontinue specific products within its product line at its own discretion. Red Rock Technologies, Inc. does not assume any liability resulting from the application or use of its products. The information contained herein has been checked and is believed to be entirely accurate; however, no responsibility is assumed for inaccuracies. "Red Rock Technologies" and the mountain logo are registered trademarks of Red Rock Technologies, Inc.

© Copyright 2020 Red Rock Technologies, Inc.
All rights reserved. (Rev. 20210106a)