

5.25" SCSI 50-Pin Narrow with Removable CFast

RRT-SPL2217-2

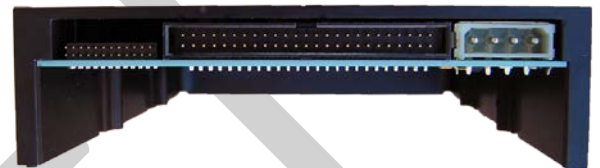
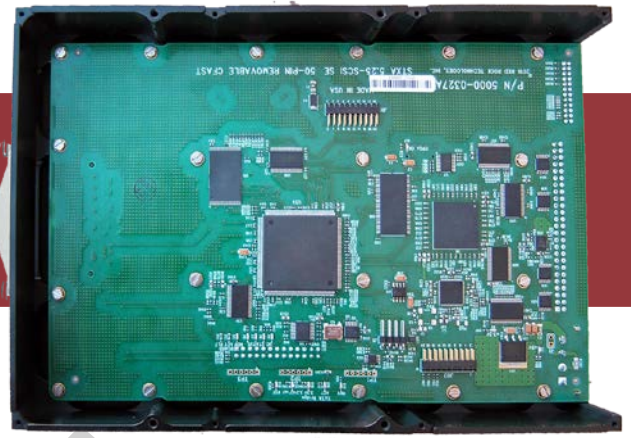
The 5.25" SCSI 50-pin Narrow with removable CFast is a proprietary FPGA based design that provides a long term solution for replacement of obsolete SCSI, floppy, tape (DAT), magneto optical (MO) and PC card drives.

The design provides a transparent interface from the SCSI bus to a COTS CFast card.

Custom firmware provided for SCSI systems that require specific SCSI command responses, capacities or sector sizes. A built-in debug monitor can be used to diagnose and update firmware.

FEATURES INCLUDE

- Drop in replacement for obsolete 50-pin Narrow SCSI drives
- Hot-swap removable CFast
- Standard 5.25" form factor
- Capacities currently up to 120GB; options for custom CFast capacities
- Ultra SCSI transfer rates up to 20 MB/s
- Single Ended (SE) interface
- Emulations for SCSI floppy, SCSI magneto optical (MO), SCSI DAT tape and SCSI PC card
- Compatible with CPUs with a SCSI SE controller
- SCSI termination can be enabled within unit
- No additional software required
- SCSI ID selection 0 – 7
- ROHS compliant



Ordering Information

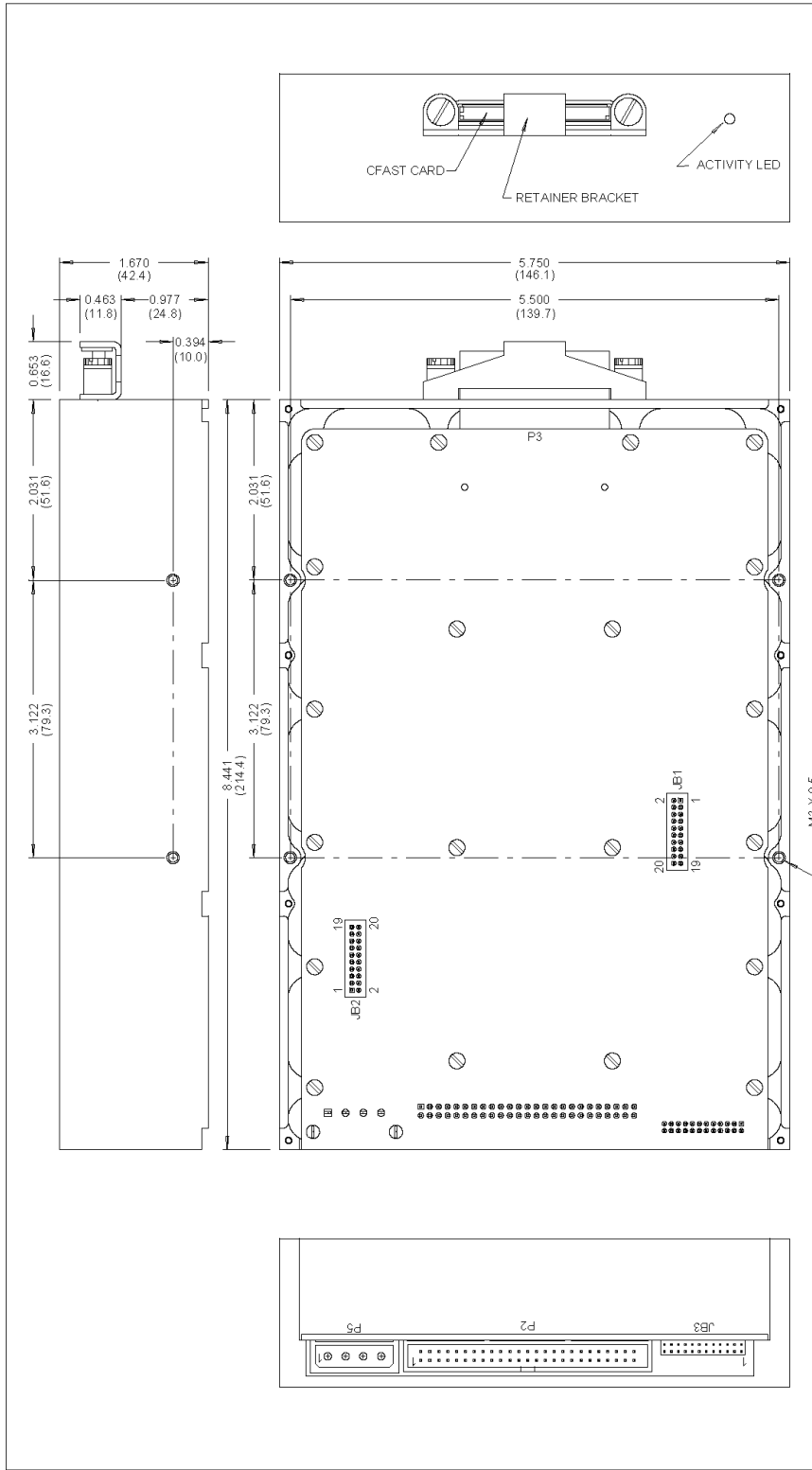
Part number: **RRT-SPL2217-2**

CFast Cards (Optional):

Capacity: 4GB NAND Flash Type: SLC MTBF: 3 million hours Operating Temp: 0°C to 70°C	RRT-CFast-SLC-4GB
Capacity: 8GB NAND Flash Type: SLC MTBF: 3 million hours Operating Temp: 0°C to 70°C	RRT-CFast-SLC-8GB
Capacity: 16GB NAND Flash Type: SLC MTBF: 3 million hours Operating Temp: 0°C to 70°C	RRT-CFast-SLC-16GB
Capacity: 32GB NAND Flash Type: SLC MTBF: 3 million hours Operating Temp: 0°C to 70°C	RRT-CFast-SLC-32GB
Capacity: 64GB NAND Flash Type: SLC MTBF: 3 million hours Operating Temp: 0°C to 70°C	RRT-CFast-SLC-64GB
Capacity: 16GB NAND Flash Type: MLC MTBF: 3 million hours Operating Temp: 0°C to 70°C	RRT-CFast-MLC-16GB
Capacity: 32GB NAND Flash Type: MLC MTBF: 3 million hours Operating Temp: 0°C to 70°C	RRT-CFast-MLC-32GB
Capacity: 64GB NAND Flash Type: MLC MTBF: 3 million hours Operating Temp: 0°C to 70°C	RRT-CFast-MLC-64GB
Capacity: 128GB NAND Flash Type: MLC MTBF: 3 million hours Operating Temp: 0°C to 70°C	RRT-CFast-MLC-128GB

3.5" SCSI 50-pin Narrow with Removable CFast Specifications

Performance	
Interface	Narrow 8-bit Single Ended (SE) Ultra SCSI, SCSI2, SCSI1
Sustained Throughput Read/Write	19 MB/s
Sector Size	512 native, custom sector sizes available
Reliability	
MTBF	3 million hours
Power	
Voltage	+5V +/- 5%
Watts-idle	3W
Watts-active	4W max
Environmental	
Temperature operating	0° to 70°C
Temperature storage	-40° to 85°C
Relative Humidity	5% to 95%
Altitude	80,000 ft (24,000 meters)
Shock	50g 11 millisecond
Vibration	12.0 Grms 20 Hz to 2000 Hz
Physical	
Form Factor	5.25" drive
Weight	21.1 oz. max (597.5g)
Dimensions (W x L x H)	8.4" x 5.75" x 1.7" (214.4mm x 146.1mm x 42.4mm)



Red Rock Technologies	
5.25" SCSI SE50W/CFAST	
Size: B	Rev: A
P/N: 1000-0550A	File: 1K0550A
By: RTL	Chk: WH
Date: 04/05/2016	Sheet: 1 of 1

CONFIDENTIAL
 Copr. 2016 Red Rock Technologies, Inc.

NOTES:
 DIMENSIONS: INCHES (MILLIMETERS)
 DIMENSIONS ARE NOMINAL

DATE	REV	DESCRIPTION	ECO	BY	CHK
04/05/2016	A	ORIGINAL RELEASE			

Red Rock Technologies, Inc. reserves the right to modify, change or discontinue specific products within its product line at its own discretion. Red Rock Technologies, Inc. does not assume any liability resulting from the application or use of its products. The information contained herein has been checked and is believed to be entirely accurate, however, no responsibility is assumed for inaccuracies. "Red Rock Technologies" and the mountain logo are registered trademarks of Red Rock Technologies, Inc.
 © Copyright 2017 Red Rock Technologies, Inc. All rights reserved. (Rev. 05/23/2017)

